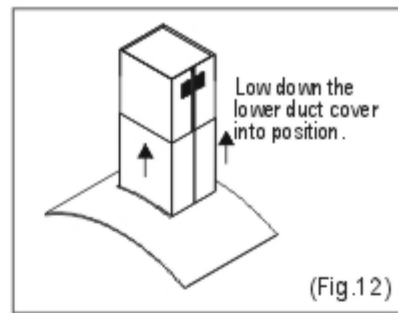


9. Take down the screw driver and row down the lower duct cover into position slowly.

----- Then complete installation -----



(Fig.12)

## G. MAINTENANCE

Prior to any maintenance operation ensure that the range hood is disconnected from the power supply.

**WARNING : FAILURE TO CARRY OUT THE BASIC STANDARDS OF CLEANING OF THE RANGE HOOD AND REPLACEMENT OF THE FILTERS MAY CAUSE FIRE RISKS. THEREFORE WE RECOMMEND OBSERVING THESE INSTRUCTIONS.**

### Cleaning Exterior surfaces :

- The range hood should be cleaned regularly internally and externally.
- Clean periodically with hot soapy water and clean cotton cloth. Do not use corrosive/abrasive detergent (e.g. Comet Power Scrub<sup>®</sup>, EZ-off<sup>®</sup> oven cleaner), or steel wool/scoring pads, which will scratch and damage the stainless steel surface.
- For heavier soil use liquid degrease such as "Formula 409<sup>®</sup>" or "Fantastic<sup>®</sup>" brand cleaner.
- After cleaning, you may use non abrasive stainless steel polish/cleaner such as 3M<sup>®</sup> or ZEP<sup>®</sup>, to polish and buff out the stainless luster and grain. Always scrub lightly with clean cotton cloth, and grain.

### Cleaning Aluminum Grease Filter / Stainless Steel Filter less Grill:

- The metal filters fitted by the factory are intended to filter out residue and grease from cooking. It need not be replaced on a regular basis but are required to be kept clean.
- This must be cleaned once a month using non aggressive detergents, either by hand or in the dish-washer, which must be set to a low temperature and a short cycle.
- When washed in a dish washer, the grease filter may discolour slightly, but this does not affect its filtering capacity.
- Dry filters and re-install before using hood.

### Replacing Filters:

- When filters wear out due to age and prolonged use, replace with Aluminum Grease Filter (with Stainless steel forelock)
- Note: Also replace damaged filter that has punctured or broken mesh, bent or broken frame.

### Replacing the light bulb:

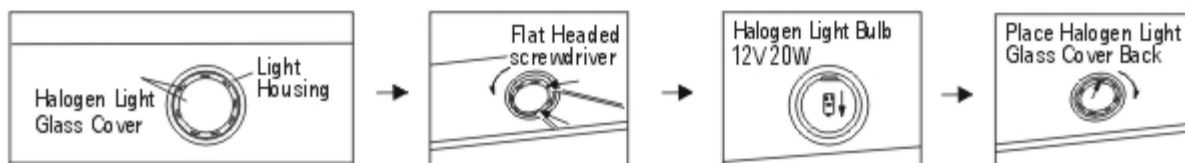
#### WARNING

Disconnect the hood from electricity and be sure the lights are cool.

#### Halogen Light Design

- Should the light bulb burned out due to age or prolonged use, replace with 20W 12V halogen bulb.
- If new lights do not operate, make sure the light bulb is inserted correctly.

- (1) Turn off the range hood.
- (2) **Make sure the lights are cool to touch**, Use a flat hand screwdriver or equivalent tool carefully turn the inner ring counter-clockwise with to pop out the protective covering of the light.
- (3) Gently pull out the defective bulb and discard accordingly.
- (4) Install a new halogen light bulb and reverse the steps.



**⚠ WARNING**

**BURNS HAZARD**  
Light bulb become extremely hot when turned on. DO NOT touch bulb until switched off and cooled. Touching hot bulbs could cause serious burns.

**SEVERE INJURY**  
Rotating fan can cause severe injury. Stay clear of fan when motor is running.

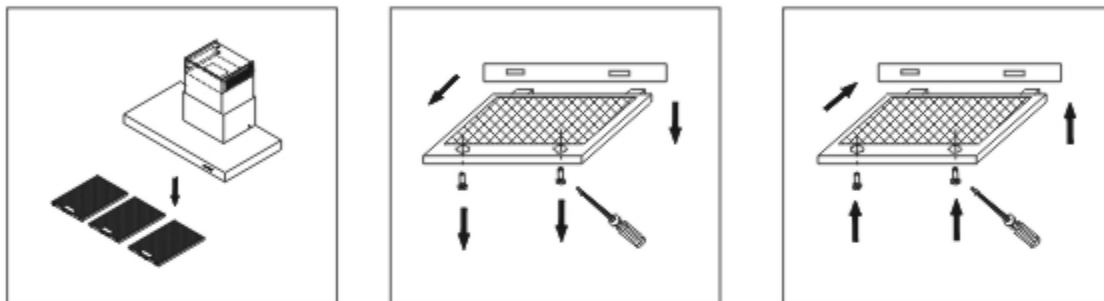
## H. REPLACEMENT OF CHARCOAL FILTER

**ALWAYS SWITCH OFF THE HOOD BEFORE ANY REPLACEMENT.**

Replacement of charcoal filter:

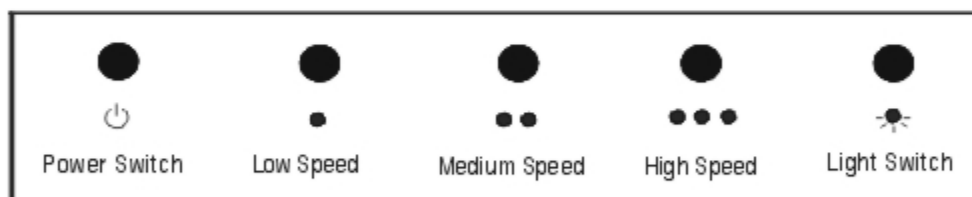
- 1) Remove aluminum filters on the range hood.
- 2) Remove the original charcoal filter by unscrewing down the two screws
- 3) Replace the old charcoal filter by new charcoal filter. Then position the charcoal filter and align the screw holes, reinstall and fasten two screws.
- 4) Reinstall the aluminum filters back to the range hood.

**NOTE : CHARCOAL FILTER IS CONSUMER PRODUCT MUST BE REPLACED AFTER 120 HOURS OF USE OR EVERY 2-3 MONTHS.**



## I. RANGE HOOD OPERATIONS (Normal Switch)

For Model HI



TURN ON:

- Press the speed control (Low Speed, Medium Speed, High Speed) switch to select the desired level of power. Once button is pressed, the previous speed mode will be cancel.
- Press Light Switch to turn on the lights.

TURN OFF:

- Press the Power Switch to turn off the power.
- Press Light Switch to turn off the lights.

# K. TROUBLE SHOOTING

## ⚠ WARNING



### HAZARD OF ELECTRICAL SHOCK!

Do not perform service on an electrically live system. Disconnect the main electrical supply before servicing this device. Touching electrical connectors or other exposed electrical circuitry inside this range hood when they are energized could result in death, serious bodily injury, or property damage.

#### 1. If the range hood does not operate after installation:

- Check if the range hood has been plugged in, make sure that all power has been turned back on and all electrical wiring are properly connected.
- Check the power connection with the unit is connected properly.
- Make sure the wiring between the switch board and control board are connected properly.

#### 2. The range hood vibrates when the blower is on:

- The range hood might not have been secured properly on to the wall.
- Check weather the motor is secured in place, if not, then tighten the motor in place.
- Check weather there is a damaged blower wheel, if so change the blower wheel.

#### 3. The blowers seems weak:

- Check that the duct sized used is at least 6" or 3-1/4 x 10". Range hood WILL NOT function efficiently with insufficient duct size. For example: 7" duct cover 6" holes and loosely secured.
- Check if duct is clogged or if damper unit is not opening properly. A tight mesh on a side wall cap unit might also cause restriction to the air flow.

#### 4. The lights work but the blower is not spinning at all, is stuck or is rattling:

- The blower might be jammed or scraping the bottom due to shipping damage.
- The motor is defective, possible seized - change the motor.
- The thermally protected system detects if the motor is too hot to operate and shuts the motor down. In this case the motor will function properly after the thermally protected system cool down.

#### 5. The hood is not venting out properly:

- Make sure the distance between the cook top and the bottom of the hood is within 28" and 32" in range.
- Reduce the number of elbows and length of duct work. Check if all joints are properly connected, sealed, and taped.
- Make sure the power is on high speed for heavy cooking.
- The wind from the opened window or open doors in the surrounding area are affecting the ventilation of the hood. Close all the windows and doors to eliminate the outside wind flow.
- Check weather the direction of duct opening is against the wind, if so then adjust the duct opening direction.
- Check weather using the wrong size of ducting.

#### 6. The light does not work:

- Check weather the light bulb is loose. If so then tighten the light bulb.
- Swap out light assembly to working ones to determine weather it is caused by defective light bulbs

**NOTE: For all other inquiries, please contact us.**

# L. SPECIFICATIONS

Model	Model HI	Model HI-L
Power Rating	120V / 60Hz ( USA & Canada standard )	
General Input Power	240W ( 160W + 4 x 20W )	240W ( 160W + 4 x 20W )
Motor Input Power	160W	160W
Motor Revolution	1400 R.P.M. ( ±10% )	1400 R.P.M. ( ±10% )
Levels Of Speed Control	3 Levels	2 Levels
Air Pressure	280 Pa	280 Pa
Noise Level (dB / sone )	Approximately 55/ 2.8 to 59/3.8 (Lowest to highest Speed)	
Motor Type	Single motor	Single motor
Fan Type	Sirocco	Sirocco
Control Type	Push Button	Push Button with LCD screen
Illumination	20W * 4 (Halogen Light)	20W * 4 (Halogen Light)
Venting Size	6" inch Round	6" inch Round

\*Specifications subject to change without notice.



# WINDSTER™

---

## Limited Warranty

**Windster Hoods Inc.** warrants this product against defects in material or workmanship as follows:

- 1) **Labor:** For a period of one (1) year from the date of purchase, if this product is determined to be defective, Windster will repair or replace the product, at its option, at no charge. After the warranty period, you must pay for all labor charges. During the "labor" warranty period there will be no charge for labor.
- 2) **Parts:** In addition, Windster will supply, at no charge, new or rebuilt replacements in exchange for defective parts for a period of two (2) years. After the warranty period, you must pay for all parts costs. During the "Parts" warranty period, there will be no charge for parts.

You must carry-in or mail-in your product during the warranty period. This warranty only applies to products purchased and serviced in the United States or Canada.

### What Is Not Covered By These Warranties:

- 1) Conditions and damages resulting from any of the following:
  - Improper installation, delivery, or maintenance.
  - Any repair, modification, alteration or adjustment not authorized by the manufacturer or an authorized service dealers.
  - Misuse, abuse, accidents, or unreasonable use.
  - Incorrect electric current, voltage or supply.
  - Improper setting of any control.
  - Improper chemical cleaning.
- 2) Light Bulbs
- 3) Products purchased for commercial or industrial use (such as in a hotel, office, restaurant, or other business)
- 4) Damage due to earthquake, flood, storm, etc.

### Defective Products:

All products will be inspected, tested, and carefully packed by the manufacturer before shipping to customers. Products that are damaged during transit can only be exchanged for the same product, under the condition that the customer must get a RMA (Return Merchandise Authorization) from Windster. When products are received defective, you must notify us within the 3 business days of receiving the package. Replacement products are only shipped when the RMA is issued. NO EXCEPTIONS.

### Return Policy

Windster offers only the best and highest quality products. If you are not satisfied with your purchase, please contact us within 3 business days of product arrival to obtain a Return Merchandise Authorization (RMA). Returns sent without a RMA will not be accepted. There will be a 25% re-stocking fee for every returned item. Shipping fee will also be deducted from the original purchase price. When returning a package, please include a copy of your purchase receipt. Use the original shipping box and packing materials and completely remove or cover the original shipping label. Make sure that products are in brand new condition, uninstalled, un-drilled, and contain everything that came with the package as when you first received it. If any parts or manuals are missing, we have the right not to accept the return.

We suggest that you use a traceable and reputable carrier of your choice to ship your return. Your credit or refund will be processed within 10-14 business days from the date we receive your return.