

Model: ECP-360

# INSTALLATION MANUAL

## SAFETY INSTRUCTIONS

Before installation and operation, read these instructions carefully and use this product only in the manner described by the manufacturer in the operation manual. The instruction shown below are used to alert you to potential personal injury and property damage hazards. There are three hazard classifications based on potentially dangerous situations. Obey all safety instructions that show these symbols to avoid possible injury, death and property damage.

- WARNING:** WARNING indicates a potentially hazardous situation which, if not avoided, could result in death or serious injury.
- CAUTION:** CAUTION indicates a potentially hazardous situation which, if not avoided, may result in minor or moderate injury.
- CAUTION:** CAUTION used without the safety alert symbol indicates a potentially hazardous situation which, if not avoided, may result in property damage.

**NOTE:** The safety instructions are explained with the following pictographic symbols.

- means prohibition. It indicates actions, if any, that must not be done.
- means forcible execution. It indicates actions, if any, that must be done.

### WARNING

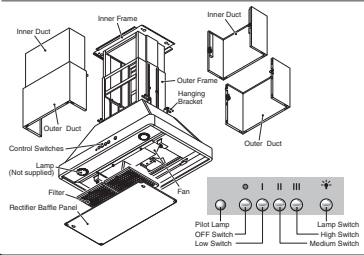
1. TO REDUCE THE RISK OF FIRE, ELECTRIC SHOCK, OR INJURY TO PERSONS, OBSERVE THE FOLLOWING:
  - a) Use this unit only in the manner intended by the manufacturer. If you have questions, contact the manufacturer.
  - b) Before servicing or cleaning the unit, switch power off at service panel and lock the service disconnecting means to prevent power from being switched on accidentally. When the service disconnecting means cannot be locked, securely fasten a prominent warning device, such as a tag, to the service panel.
2. To reduce the risk of fire or electric shock, do not use this product with any solid-state speed control device.
3. TO REDUCE THE RISK OF FIRE, ELECTRIC SHOCK, OR INJURY TO PERSONS, OBSERVE THE FOLLOWING:
  - a) Installation work and electrical wiring must be done by a qualified person(s) in accordance with all applicable codes and standards, including fire-rated construction.

- b) Sufficient air is needed for proper combustion and exhausting of gases through the flue (chimney) of fuel burning equipment to prevent back drafting. Follow the heating equipment manufacturer's guidelines and safety standards such as those published by the National Fire Protection Association (NFPA), and The American Society for Heating, Refrigeration and Air Conditioning Engineers (ASHRAE), and the local code authorities.
- c) When cutting or drilling into wall or ceiling, do not damage electrical wiring and other hidden utilities. Ducted fan must always be vented to outdoors.
4. TO REDUCE THE RISK OF FIRE, USE ONLY METAL DUCTWORK.
5. This unit must be grounded.
6. Check that the hood is correctly installed, since incorrect installation could result in the range hood becoming detached and falling off.
7. Connect only to an AC120 Volt power source or the range hood could result in fire, electric shock, and damage.

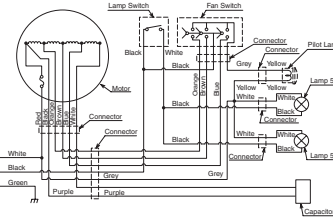
### CAUTION

1. For general ventilating use only. Do not use to exhaust hazardous or explosive material and vapors.
2. To reduce the risk of fire and to properly exhaust air, be sure to duct air outside. Do not vent exhaust air into spaces within walls, ceilings or into attics, crawl spaces or garages.
3. Read specification label on this product for further information and requirements.
4. Use only for the purpose of kitchen ventilation.
5. Do not install this range hood in the bathroom or in other wet rooms since electrical shock and damage may result.
6. Fasten the filter and other parts securely. Incorrect attachment may result in personal injury or property damage.

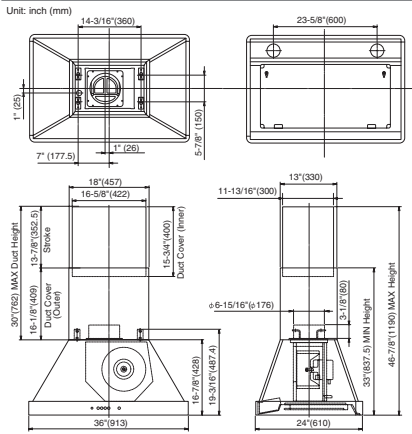
## NAMES OF PARTS



## CIRCUIT DIAGRAM



## DIMENSIONS

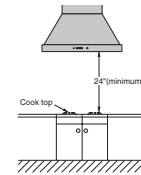


## ACCESSORIES

- Screw M5.1x45 Eight (8) pcs.
- Exhaust Port One (1) pc.
- Screw M5x10 Four (4) pcs.
- Hanging Bracket Four (4) pcs.

## RANGE HOOD LOCATION

- 1 The range hood must be installed just above the cooktop.
- 2 The minimum distance from the cooking surface to the bottom of the range hood must be 24".
- 3 The total weight of the ECP-360 range hood unit is 86.0 lbs. (39 kg)
- 4 Power requirements are: AC120 V, 60 Hz, 3 Amp



### CAUTION:

- Check that the hood is correctly installed, since incorrect installation could result in the detachment of the range hood and the unit could fall down.
- To protect hands from injury, wear working gloves when installing the range hood.

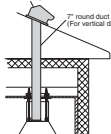
# INSTALLATION

## 1. Preparation

### WARNING:

- Ensure that the metal duct does not touch other metal housing materials, otherwise fire or electric shock could result.

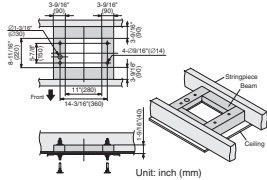
- 1 This range hood is designed to install using anchor bolts as illustrated and discharge upward. For vertical discharge, run duct work between the hood location and roof cap location. To get the best result, use a minimum number of transitions and elbows. Be sure to attach a roof cap to avoid rain from entering into the exhaust duct.



### CAUTION:

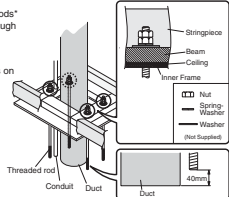
- Install the range hood unit using anchor bolts durable enough to support its weight (withstand load: more than 441lbs. (200kg/pc). Otherwise, it may be detached and fall down.

- 2 Referring to the figure below, make an opening in the ceiling and reinforce around the opening with some beams. Then, make 5 holes as shown in the figure.



- 3 Arrange the ends of 7" round duct and conduit so that they can connect with the top of the range hood unit.

- 4 Pass 4 threaded rods (not supplied) through the holes of the ceiling and put washers, spring washers, and nuts on the rods, then fix them to the beam. (\*12-14 anchor bolt, length = duct height - 40mm)



- 5 (1) Pull out the inner frame after removing 4 screws fastening to the outer frame.

**Note:** Keep the screws for reusing later.

- (2) Fix the inner frame to the ceiling using 8 wood screws supplied after aligning its holes with the threaded rods.

- 6 Secure the threaded rods by adding washers, spring washers, and nuts from the ends of the rods.

- 7 Set 4 flange-nut (not supplied) on the threaded rods as shown for fixing the supplied hanging brackets later.

- 8

- 9

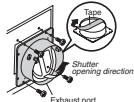
- 10

## 2. Range Hood Mounting

### CAUTION:

- Wear working gloves to avoid injury.

- 1 Detach the tape on the exhaust port, then with paying attention to the shutter opening direction, fix it using screws attached on the top plate.



- 2 Detach the rectifier baffle panel by loosening 2 fixing screws, sliding it to dislocate the keyholes from the screws, and disengage it from the catches.



- 3 Detach the filters by turning the fixing knobs counter-clockwise, and disengaging them from the supporting groove.



- 4 Attach the outer frame to the range hood unit using 4 screws supplied.

- 5 Attach 4 hanging brackets supplied to the range hood unit and fix them as shown. As the fixing screws are attached on the top plate, remove them once and use for fastening the hanging brackets.

- 6

- 7

- 8

- 9

- 10

- 11

- 12

- 13

- 14

- 15

- 16

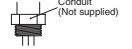
- 17

## 3. Connecting Power Supply Wires

### WARNING:

- Electrical wiring should be done by a qualified person(s) in accordance with all applicable codes and standards, including fire-rated construction. An unqualified person doing the work could result in fire, electric shock or injury.
- This range hood uses 120V AC. Do not connect to other voltage since fire, electric shock or damage could result.

- 1 Remove the nut from the conduit connector at the end of power wiring.



- 2 Remove two screws fixing the wire cover and detach it.



- 3 Connect the conduit through the connecting hole of the body using the nut previously removed.



- 4 Connect wires tightly and securely using wire connectors (not supplied). Connect the electrical wires as follows:



- 5

- 6

- 7

- 8

- 9

- 10

- 11

- 12

- 13

- 14

- 15

- 16

- 17

## 4. Attaching Duct Cover

- 1 Attach the inner duct (front and rear). Insert the upper edge of the inner duct into the gap between the inner frame and ceiling with sliding on the guide frame on both sides, then push the front and rear ducts until they are fixed by their roller catch.

- 2 Attach the outer duct (front and rear). Place the outer duct on the range hood unit, and push the front and rear ducts until they are fixed by their roller catch.

- 3 Fix the outer duct (front and rear) to the range hood unit using 4 screws supplied as shown.

- 4

- 5

- 6

- 7

- 8

- 9

- 10

- 11

- 12

- 13

- 14

- 15

- 16

- 17

- 18

- 19

- 20

- 21

- 22

- 23

- 24

- 25

- 26

- 27

- 28

- 29

- 30

- 31

- 32

- 33

- 34

- 35

- 36

- 37

- 38

- 39

- 40

- 41

- 42

- 43

- 44

- 45

- 46

- 47

- 48

- 49

- 50

- 51

- 52

- 53

- 54

- 55

- 56

- 57

- 58

- 59

- 60

- 61

- 62

- 63

- 64

- 65

- 66

- 67

- 68

- 69

- 70

- 71

- 72

- 73

- 74

- 75

- 76

- 77

- 78

- 79

- 80

- 81

- 82

- 83

- 84

- 85

- 86

- 87

- 88

- 89

- 90

- 91

- 92

- 93

- 94

- 95