

Power Attic Ventilator

MODEL: RF-49 Series

IMPORTANT SAFETY INSTRUCTIONS

WARNING: TO REDUCE THE RISK OF FIRE, ELECTRIC SHOCK, OR INJURY TO PERSONS, OBSERVE THE FOLLOWING:

- A. Use this unit only in the manner intended by the manufacturer. If you have questions, contact the manufacturer.
- B. Before servicing or cleaning unit, switch power off at service panel and lock service panel to prevent power from being switched on accidentally.
When the service disconnecting means cannot be locked, securely fasten a prominent warning device, such as a tag, to the service panel.

CAUTION:

For general ventilating use only. Do not use to exhaust hazardous or explosive materials and vapors.

CAUTION:

This unit has an unguarded impeller. Do not use in locations readily accessible to people or animals.

WARNING: TO REDUCE THE RISK OF FIRE, ELECTRIC SHOCK, OR INJURY TO PERSONS, OBSERVE THE FOLLOWING:

- A. Installation work and electrical wiring must be done by qualified person(s) in accordance with all applicable codes and standards, including fire-rated construction.
- B. Sufficient air is needed for proper combustion and exhausting of gases through the flue (chimney) of fuel burning equipment to prevent back drafting. Follow the heating equipment manufacturer's guideline and safety standards such as those published by the National Fire Protection Association (NFPA), and the American Society for Heating, Refrigeration, and Air Conditioning Engineers (ASHRAE), and the local code authorities.
- C. When cutting or drilling into wall or ceiling, do not damage electrical wiring and other hidden utilities.
- D. Ducted fans must always be vented to the outdoors.
- E. If this unit is to be installed over a tub or shower, it must be marked as appropriate for the application.
- F. NEVER place a switch where it can be reached from a tub or shower.

IMPORTANT: For every 300 CFM of fan performance, a minimum of one square foot of inlet space in attic or crawl space is necessary for proper operation. Inlet areas should be located as far from fan location as possible, such as in the eave or side walls.

MOUNTING THE FAN

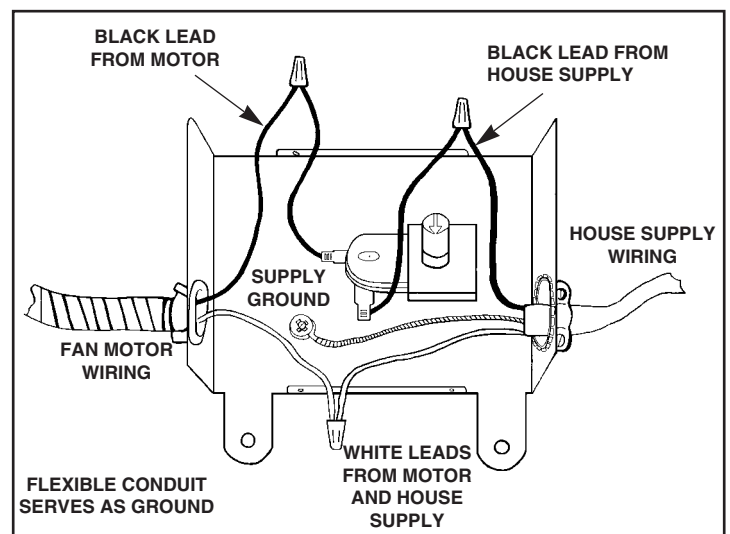
IMPORTANT: If the fan will be mounted on a flat roof, make a curb on which to mount the fan; the fan must be above the level of the roof's water line.

1. Determine the location of the fan. Place the unit on top of the shingles as close to the center of the roof as possible and near the ridgeline. For best appearance, the unit should be mounted on the back side of the house and should be visible only on one side of the roof. This will require that the unit be moved down slightly from the ridgeline.
2. When the desired location is established, locate a center line between two rafters and drill a small hole through the roof from the inside. This hole will be used as a center for the following operations.
3. Draw a reference square on 25 $\frac{3}{8}$ " by 25 $\frac{3}{8}$ " on the roof using the drilled hole as a center. Within the square, draw a 17 $\frac{3}{8}$ " diameter circle. Cut and remove the shingles, nails and felt within this circle. Draw and cut a 14 $\frac{3}{8}$ " diameter hole through the decking.
4. With the lettering of the unit parallel to the ridgeline, slide the top flange of the unit up under the shingles (some roofing nails may need to be removed). Position the unit on the reference square previously drawn to align the exhaust openings. With the unit located, apply a generous amount of roofing compound between the flange and shingles approximately 1" in from perimeter of flange. Secure with galvanized roofing nails. Follow the nailing pattern shown.

MOUNTING THE THERMOSTAT/ OUTLET BOX

IMPORTANT: Do not mount outlet box near heat source.

1. Mount the outlet box to a nearby rafter so that the outlet box is higher than the fan motor.



WIRING

CAUTION: Be sure fan and switches are properly grounded and all wiring complies with local electrical code requirements.

1. Run 120V, power wiring to the thermostat outlet box and secure with a box connector. Use 14 gauge wire with ground. See wiring diagram
2. It is suggested that an on/off switch be installed in a convenient location in the living quarters of the house so the fan can be turned off when not needed.

ADJUSTING THE THERMOSTAT

The fan thermostat is preset at 110°F. The fan will automatically start when the ambient temperature reaches that level and stop when the temperature drops 10 degrees below the set temperature. Starting temperature can be adjusted from 60°F to 120°F.

OPTIONAL ACCESSORY (Sold separately)

Model AHS-200 Automatic Heat Sensor will automatically shut down the Attic Fan if, for any reason, the temperature in the attic reaches 200°F.

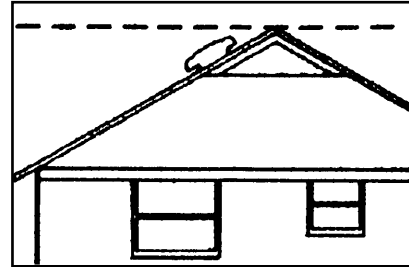
MAINTENANCE

CAUTION: Before cleaning or servicing unit, make sure power is disconnected at service panel. (See important safety instructions on page 1.)

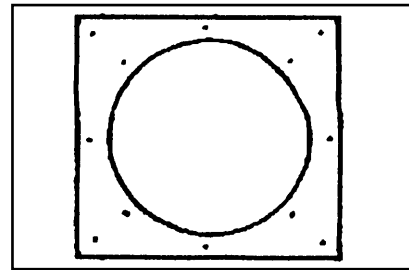
At the beginning of each ventilating season, check fan for any debris that may be blocking fan blades, screen, or motor ventilation openings.

To extend motor life, lubricate motor at the beginning of each ventilating season. Oil ports are located on the front and back of the motor. Use 5 or 6 drops of 20W non-detergent motor oil in each port.

SUGGESTED LOCATION OF VENTILATION



NAILING PATTERN



NuTone®

One Year Limited Warranty

WARRANTY OWNER: NuTone warrants to the original consumer purchaser of its products that such products will be free from defects in materials or workmanship for a period of one (1) year from the date of original purchase. **THERE ARE NO OTHER WARRANTIES, EXPRESS OR IMPLIED, INCLUDING, BUT NOT LIMITED TO, IMPLIED WARRANTIES OF MERCHANTABILITY OR FITNESS FOR A PARTICULAR PURPOSE.**

During this one year period, NuTone will, at its option, repair or replace, without charge, any product or part which is found to be defective under normal use and service. **THIS WARRANTY DOES NOT EXTEND TO FLUORESCENT LAMP STARTERS OR TUBES, FILTERS, DUCT, ROOF CAPS, WALL CAPS AND OTHER ACCESSORIES FOR DUCTING.** This warranty does not cover (a) normal maintenance and service or (b) any products or parts which have been subject to misuse, negligence, accident, improper maintenance or repair (other than by NuTone), faulty installation or installation contrary to recommended installation instructions.

The duration of any implied warranty is limited to the one year period as specified for the express warranty. Some states do not allow limitation on how long an implied warranty lasts, so the above limitation may not apply to you.

NUTONE'S OBLIGATION TO REPAIR OR REPLACE, AT NUTONE'S OPTION, SHALL BE THE PURCHASER'S SOLE AND EXCLUSIVE REMEDY UNDER THIS WARRANTY. NUTONE SHALL NOT BE LIABLE FOR INCIDENTAL, CONSEQUENTIAL OR SPECIAL DAMAGES ARISING OUT OF OR IN CONNECTION WITH PRODUCT USE OR PERFORMANCE. Some states do not allow the exclusion or limitation of incidental or consequential damages, so the above limitation or exclusion may not apply to you. This warranty gives you specific legal rights, and you may also have other rights, which vary from state to state. This warranty supersedes all prior warranties.

WARRANTY SERVICE: To qualify for warranty service, you must (a) notify NuTone at the address stated below or telephone 1/800-543-8687, (b) give the model number and part identification and (c) describe the nature of any defect in the product or part. At the time of requesting warranty service, you must present evidence of the original purchase date.

Date of Installation

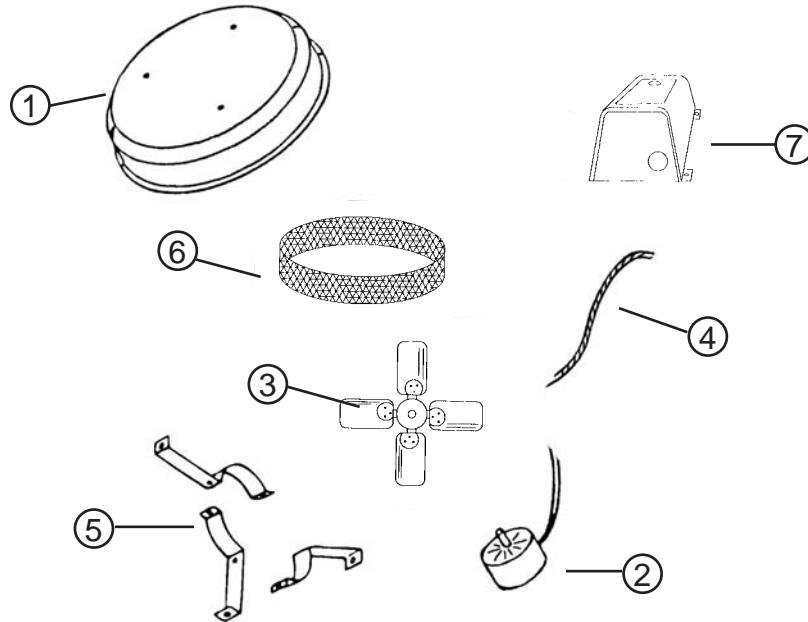
Builder or Installer

NuTone®

an *EefaCo.* Store
1-800-667-8721

PARTS LIST

| EFFECTIVE DATE | MODEL NUMBER | PRODUCT GROUP |
|----------------|------------------------------------|---------------|
| JANUARY 1999 | RF-49RP, RF-49AM, RF-49WG, RF-49BR | FAN |



| REF. | ORIGINAL PART NO. | PART DESCRIPTION | MODEL USED ON | CURRENT REPLACEMENT PART NO. |
|------|-------------------|---------------------------------|--------------------------------|------------------------------|
| 1 | 0702B | COVER | RF-49RP | 0702B-000 |
| | 0703B | COVER | RF-49AM | 0703B-000 |
| | 0704B | COVER | RF-49WG | 0704B-000 |
| | 0705B | COVER | RF-49BR | 0705B-000 |
| 2 | 0706B | MOTOR | RF-49RP, RF-49AM, RF-WG, RF-BR | 0706B-000 |
| 3 | 0707B | BLADE | RF-49RP, RF-49AM, RF-WG, RF-BR | 0707B-000 |
| 4 | 0708B | CONDUIT | RF-49RP, RF-49AM, RF-WG, RF-BR | 0708B-000 |
| 5 | 0709B | MOTOR MOUNTING BRACKET (1 OF 3) | RF-49RP, RF-49AM, RF-WG, RF-BR | 0709B-000 |
| 6 | 0710B | BIRD GUARD | RF-49RP, RF-49AM, RF-WG, RF-BR | 0710B-000 |
| 7 | 0711B | OUTLET BOX THERMOSTAT ASSY | RF-49RP, RF-49AM, RF-WG, RF-BR | 0711B-000 |

↑

NOTE: Always order by current part number

RF-49 Series I.I.

NuTone®

an *EefaCo.* Store
1-800-667-8721